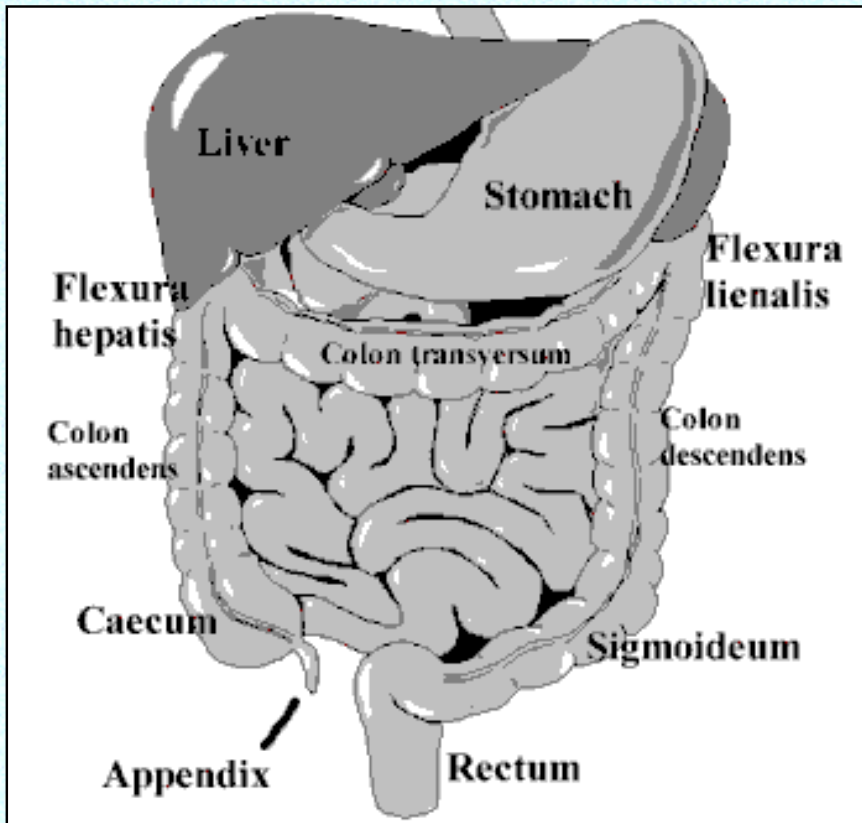


# the **GASTROLAB** Endoscopy Picture Archives

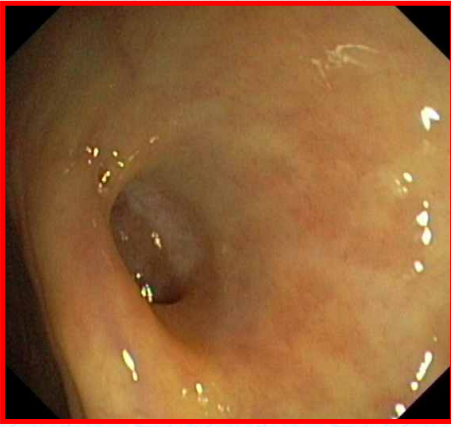
## Anatomy of Colon and Rectum

The endoscopic images in this site are mostly quite compressed in order to make the transmissions times as short as possible. Sometimes it is however nice to have high resolution images, for example for publications, text books or lectures. In these "high resolution files" some larger images are displayed.

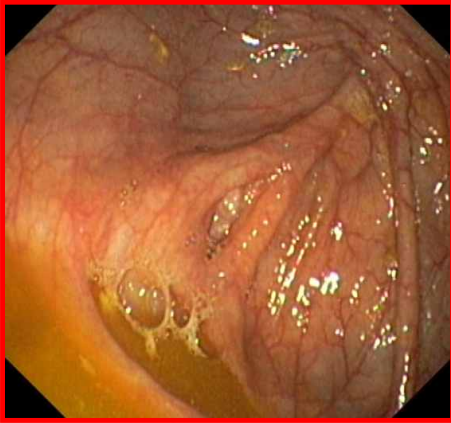
Just click on any image to get a magnification (and then click "Back" on Your browser). Click [here](#) to get back to the index page.



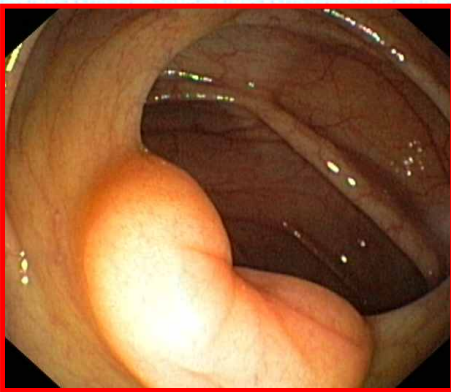
Anatomy of the large bowel (colon) and rectum



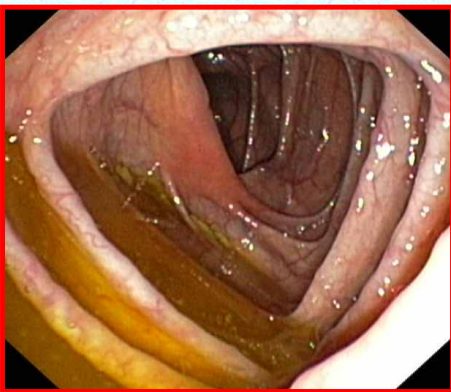
**Aperture of the Appendix**



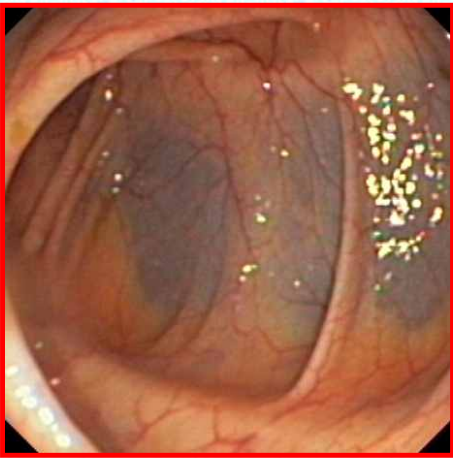
**Caecum, Aperture of the Appendix**



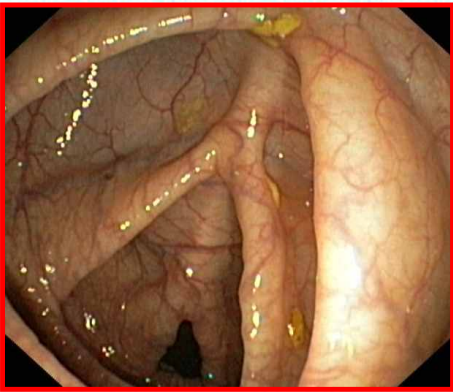
**Ileocaecal Valve (Valvula Bauhini)**



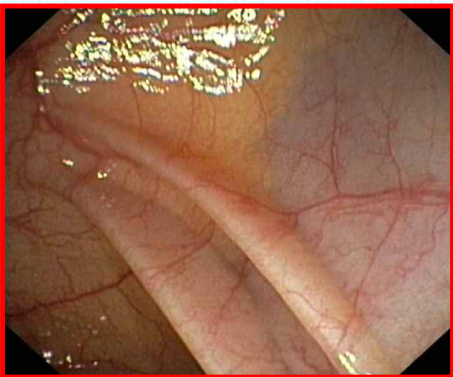
**Ascending colon (Colon Ascendens)**



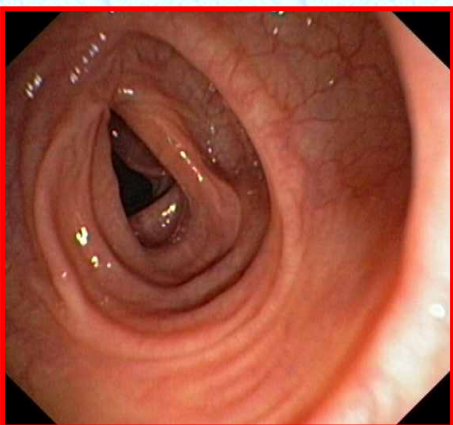
**Hepatic Flexure (Flexura hepatica)**



**Transverse colon (Colon Transversum)**

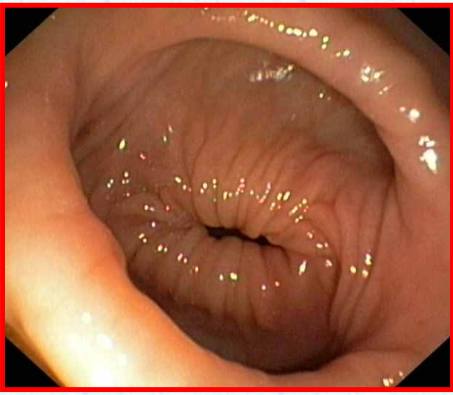


**Spleen Flexure (Flexura lienalis)**

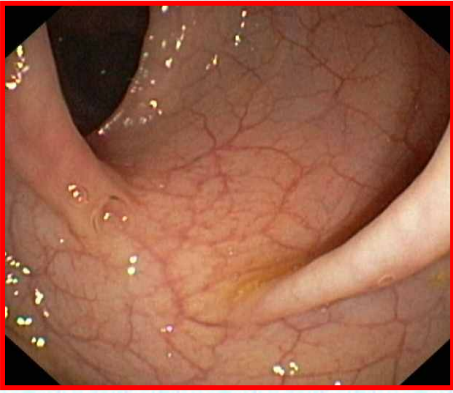


**Descending colon (Colon Descendens)**

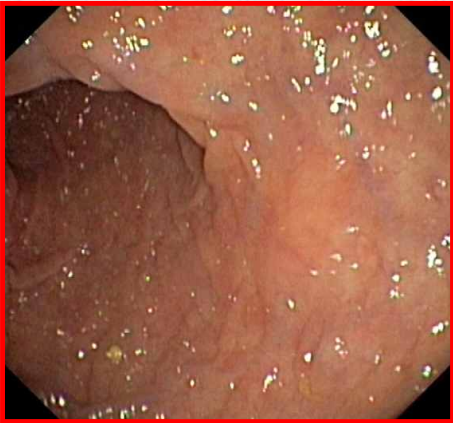




**Sigmoid Colon (Sigmoideum)**



**Rectum**



**Ampulla Recti (the Distal Part of the Rectum)**



**Anus**

